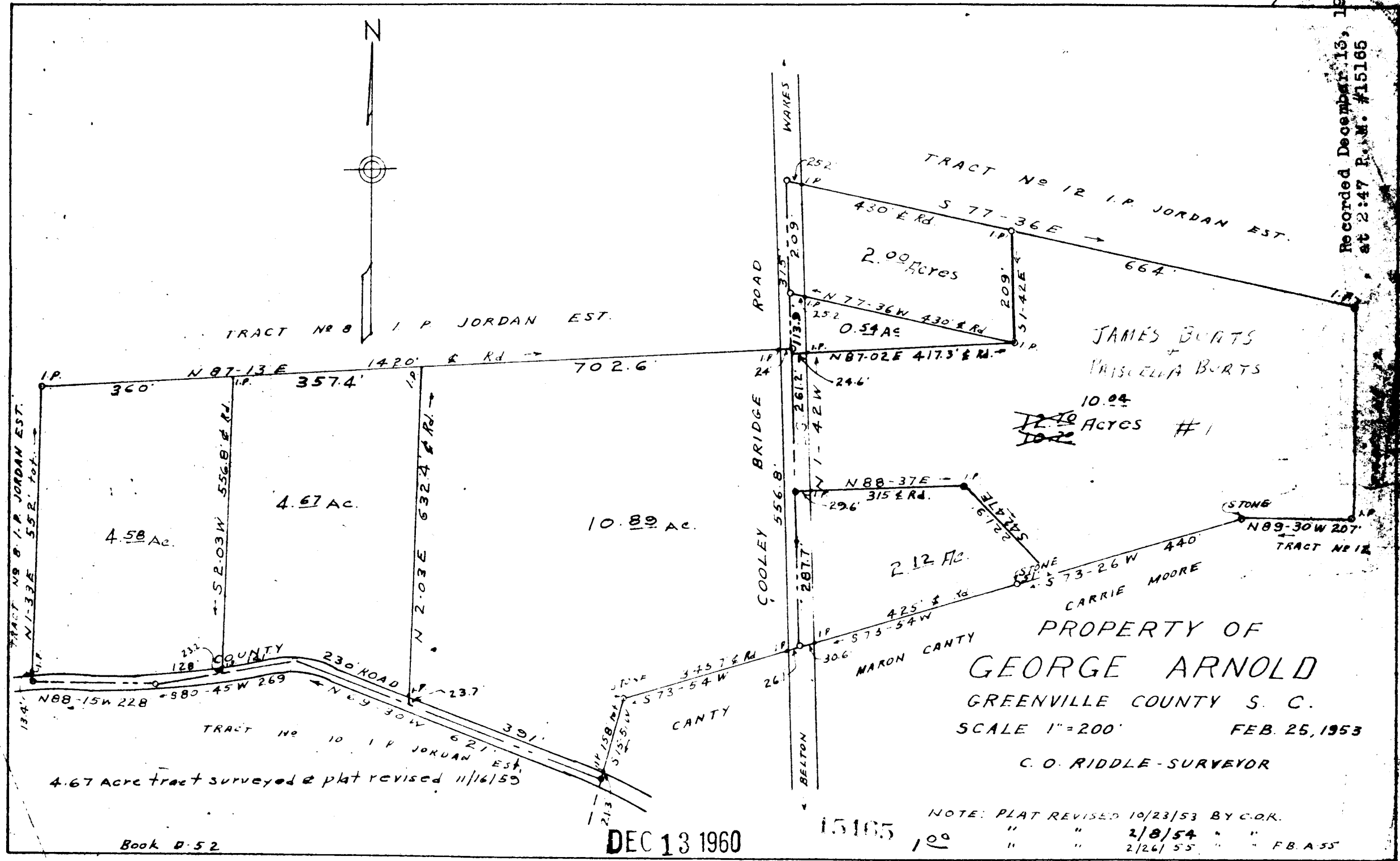
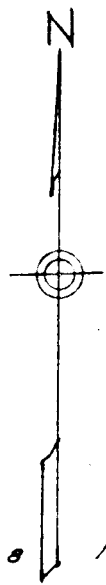


90

Recorded December 13, 1960  
at 2:47 P.M. #15165



JAMES BURTS  
+  
PRISCILLA BURTS

10.04  
~~12.10~~ ACRES #1  
~~10.00~~

PROPERTY OF  
GEORGE ARNOLD  
GREENVILLE COUNTY S. C.

SCALE 1"=200' FEB. 25, 1953

C. O. RIDDLE - SURVEYOR

4.67 Acre tract surveyed & plat revised 11/16/59

Book D. 52

DEC 13 1960

15165

NOTE: PLAT REVISED 10/23/53 BY C.O.R.  
" " " 2/8/54 " " F.B.A. 55  
" " " 2/26/55 " " F.B.A. 55  
" " " 9/19/57